

For Earth, For Life  
**Kubota**

## KUBOTA WHEEL LOADER R070 / R090



Engine output (PS):

**R070: 50.8**

**R090: 64.3**

Machine weight (kg):

**R070: 4,445**

**R090: 4,945**



# Comfort, easy operation, and all the power you need.

Kubota's next-generation R070 and R090 wheel loaders are built to get the job done quickly, easily, and efficiently. They're built for comfort, with a new, high-visibility cab. They're also built for safe and simple operation, even by operators with no loader experience. And they're built for performance, with enhanced productivity features and power to spare.

PERFORMANCE

COMFORT  
EASY  
OPERATION

SERVICE  
SAFETY  
SECURITY



KUBOTA WHEEL LOADER

R070  
R090



# COMFORT / EASY OPERATION

Redesigned inside and out, both the R070 and R090 wheel loaders boast a fully enclosed glass cab for improved visibility, as well as a more ergonomic control layout.

## HIGH-VISIBILITY CAB

Fully enclosed in glass, the high-visibility cab offers the operator a panoramic perspective of the environment outside, with the pallet fork tips clearly visible from the driver's seat. The full glass door, and wide opening window provide excellent visibility to the left and right, whilst the rear window offers an unobstructed view when reversing.



## FULL OPENING RIGHT WINDOW

The window on the right side of the cab opens fully to improve ventilation as well as communication with workers outside.

## NEW INTERIOR DESIGN

The spacious cabs ergonomic layout is designed to keep you working comfortably from start to finish.



## DIGITAL DISPLAY

Bright and easy-to-read, the digital instrument panel tells you at a glance everything you need to know about the machine's functions and conditions. A full set of diagnostic indicators automatically monitor critical machine conditions, letting you concentrate on the job at hand.

## LARGE FOOT SPACE

Plenty of space for the feet means greater comfort for the operator. And that means greater productivity during those long days on the work site.

## AIR CONDITIONING (option)

A powerful cooling/heating system and eleven vents provide optimum comfort on the coldest winter and hottest summer days.



## ADJUSTABLE RIGHT WRIST REST

This feature reduces fatigue by reducing arm movement and allowing you to more easily operate the hand lever.

## TILT STEERING

With the flick of a lever, the steering wheel can be tilted up or down to the most comfortable and efficient position for drivers of all sizes.

## FULL-SUSPENSION SEAT

A full-size, full-suspension adjustable seat enhances operator comfort. The padded seat can be moved forward or back for optimum comfort.

## ENLARGED GLASS SURFACE

The areas of clear glass on the front and side panels have been enlarged to improve visibility.

## NEW LIFT ARM DESIGN

A new "Delta" lift arm design allows the operator to easily see the hydraulic quick-coupler pins. Rerouted hydraulic piping improves visibility of the toe during pallet fork operations.





# PERFORMANCE

**Long reach and excellent lifting power ensure superior performance for a wide range of loader tasks.**

## WORKING RANGE

A long reach and high clearance make all types of material handling jobs easy. The long reach and high clearance lets you load trucks with ease, whilst the superior reach makes pallet fork operations faster and more efficient.



## LIFTING CAPACITY

A strong lifting force provides both R070 and R090 smooth lifting and re-handling of heavy materials onto a wide variety of trucks.

**R070: 1880 kgf**  
**R090: 2160 kgf**  
**(Max. payload 80%)**

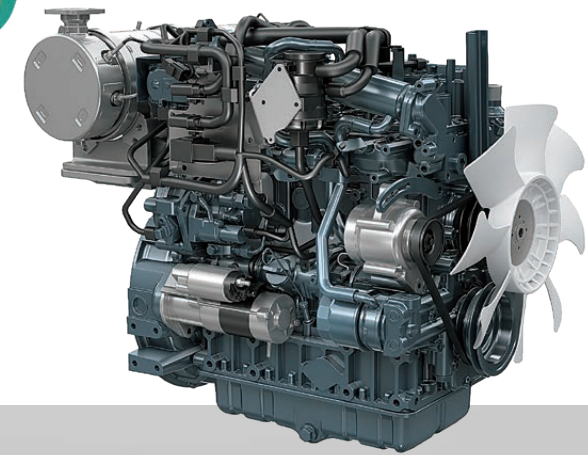
## MULTI-FUNCTION OPERATING LEVER

All major loader functions are on a single lever that is easy to operate with just one hand, both on the R070 and R090. The 2-step speed control switch lets you quickly change speeds, allowing you to operate at optimum efficiency for the task at hand.



## KUBOTA ORIGINAL DI ENGINE WITH CRS AND DPF MUFFLER

Equipped with CRS and DPF, Kubota's V2607 direct-injection engine is now fully Stage-V compliant. The new and improved DPF reduces maintenance by increasing the service intervals for both the regeneration filter and ash cleaner.



## ENGINE OUTPUT

**R070: 50.8 PS**  
**R090: 64.3 PS**

**R070: 3230 mm**  
**R090: 3230 mm**

## ARM TILT / PARALLEL MOVEMENT

Transporting a fully loaded pallet with the pallet fork, Kubota's arm tilt/parallel movement structure keeps the load upright and steady, even while raising or lowering the lift arm.

## DIFFERENTIAL LOCK (100% on demand, front + rear)

Should the wheels start to slip, simply press the differential lock switch to immediately engage both front and rear wheels. The result is positive slip-free traction.



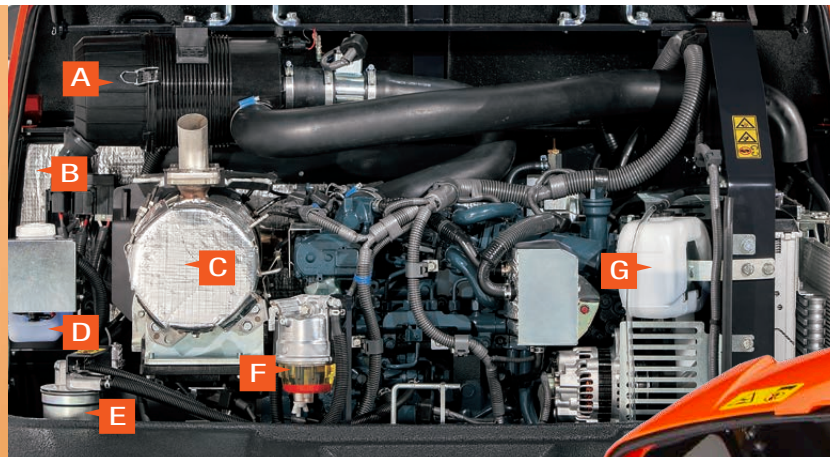


# SERVICE / SAFETY SECURITY

Simple maintenance, enhanced safety, and dependable security features ensure that your R070 and R090 loaders are productive, safe, and secure.

## SIMPLE AND SECURE TRANSPORTATION

With an overall height below 2500 mm, the R070 and R090 slip easily under road bridges for fast and safe transportation between job sites. Six tie-down points allow simple yet secure attachment to a truck bed for safety during transportation.



- A DUAL ELEMENT AIR CLEANER
- B BATTERY
- C DIESEL PARTICULATE FILTER (DPF) MUFFLER
- D WASHER TANK
- E FUEL FILTER
- F WATER SEPARATOR
- G RESERVE TANK

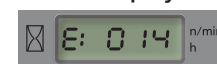
## EASY MAINTENANCE

The engine bonnet at the rear opens wide, providing quick and easy access to the machine's main service areas. Items that require routine maintenance and service are within easy reach for fast and simple servicing. Quick-open panels on the right and left sides provide speedy access to the fuel refill (right side) and battery (left side). Other areas of the R070 and R090 are also easy to service and maintain.

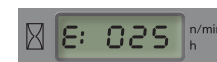
## DIGITAL DIAGNOSTIC INDICATORS

A bright easy-to-read digital diagnostic indicator keeps you fully informed of critical loader and engine conditions.

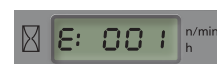
### • Error display



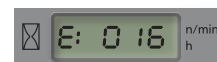
Hydraulic oil temperature has reached a specified level



Parking brake error



Meter ECU communication error



Fuel sensor system error

## NEW LED WORK LIGHTS

Bright LED work lights provide plenty of illumination for nighttime tasks.



## SEAT BELT ALARM AND HIGH-VISIBILITY SEAT BELT

The bright orange seat belt is a visual reminder for site safety personnel to alert if the seatbelt is being worn before the starting of the engine by the operator. Should this be forgotten, a warning function will prompt the operator to fasten it.



## KUBOTA ANTI-THEFT SYSTEM

Only programmed keys will enable the engine to start up. Attempting to start with an un-programmed key will activate the alarm. Its features include an alert to remind the operator to extract the key after operation, and an LED to alert potential thieves that the system is activated.

Protected by KUBOTA  
**ANTI-THEFT**  
SYSTEM





Standard and optional equipments

Model	R070	R090
<b>Engine/Fuel system</b>		
KUBOTA original engine (Stage V)	●	●
Double-element air cleaner	●	●
Fuel level indication buzzer	●	●
<b>Travel system</b>		
Changeable 2 level-travel speeds	●	●
Differential lock (100% on demand, front and rear)	●	●
Wet type disc brake	●	●
Negative brake (parking brake)	●	●
<b>Hydraulic system</b>		
Hydrostatic transmission	●	●
Multi function operating lever with AUX proportional control	●	●
Hydraulic lock switch	●	●
Inching and brake pedal (left)	●	●
Attachment unlock switch	●	●
Float switch	●	●
<b>Cab</b>		
Cab with heater	●	●
Cab with air conditioner	○	○
2 front LED working lights on the cabin	●	●
Weight-adjustable suspension seat (fabric seat) with left arm rest and back rest	●	●
Retractable orange seatbelt with alert function	●	●
Adjustable right wrist rest	●	●
Digital panel with diagnosis function	●	●
ROPS (Roll-over Protective Structure, ISO3471)	●	●
FOPS (Falling Object Protective Structure, Level1, ISO3449)	●	●
Radio installation (bracket, speaker, antenna, harness)	●	●
Side mirrors	●	●
Emergency exit hammer	●	●
12V power outlet	●	●
Sun visor	●	●
Tilt steering	●	●
Beacon light	○	○
<b>Canopy</b>		
Weight-adjustable suspension seat (PVC seat) with left arm rest and back rest	●	●
Retractable orange seatbelt with alert function	●	●
Adjustable right wrist rest	●	●
Digital panel with diagnosis function	●	●

Specifications

Model		R070	R090
Operating weight (canopy/cabin)*1	kg	4355 / 4520	4855 / 5020
Bucket capacity	m³	0.65	0.85
<b>Engine</b>			
Manufacturer		Kubota	Kubota
Model		V2607-CR-E5-WL	V2607-CR-TE5-WL
Output (ISO 14396:2002)	kW	37.4	47.3
	PS	50.8	64.3
Number of cylinders		4	4
Displacement	cc	2615	2615
<b>Transmission</b>			
Type		Hydrostatic transmission	Hydrostatic transmission
<b>Operational specifications with bucket</b>			
Tipping load, straight (ISO14397-1) (canopy/cabin)	kg	3280 / 3440	3760 / 3920
Tipping load, full turn (ISO14397-1) (canopy/cabin)	kg	2880 / 3020	3300 / 3440
Max. lifting capacity at ground level	kN	30.1	36.3
Breaking force (ISO14397-2)	kN	36.4	43.9
<b>Operational specifications with pallet fork</b>			
Tipping load, full turn (ISO14397-1) (canopy/cabin)	kg	2240 / 2350	2590 / 2700
Max. payload (EN 474-3) 80%	kg	1790 / 1880	2080 / 2160
Max. payload (EN 474-3) 60%	kg	1340 / 1410	1560 / 1620

\*1 With general purpose bucket (R070: 289kg / R090: 329kg) and 75 kg operator.  
\*2 These values are measured under specific conditions at maximum engine speed and can deviate, depending on the operating status. The above values apply to a machine with standard tyres, bucket and quick coupler.

	● Standard equipment	○ Optional equipment
Model	R070	R090
ROPS (Roll-over Protective Structure, ISO3471)	●	●
FOPS (Falling Object Protective Structure, Level1, ISO3449)	●	●
Side mirrors	●	●
12V power outlet	●	●
Tool storage space (under seat)	●	●
Tilt steering	●	●
Beacon light	○	○
<b>Working equipment</b>		
2 Head lights (Headlights and Signal Lights)	●	●
Hydraulic quick coupler	●	●
Z-bar linkage with parallel movement	●	●
Rear combination light (Turn signal, Tail light, Brake light, Back light)	●	●
Bucket level indicator	●	●
Safety valve for lift arm	○	○
<b>Safety</b>		
6 Tie down points	●	●
Wheel chock	●	●
Lift arm support	●	●
Battery isolator	●	●
Towing pin	●	●
<b>Others</b>		
KUBOTA original anti-theft system	●	●
Maintenance free battery	●	●
Grease gun holder	●	●
Cup holder	●	●
Brake pedal (right)	○	○
Creeping speed function	○	○
Shock absorber for lift arm	○	○
Tool box	○	○
Rear LED working lights	○	○
Power socket for attachment	○	○
Special color	○	○
<b>Various tyres</b>		
Multipurpose: 12.5-20 317MPT (Alliance)	○	○
Industrial: 405/70 R18, SPT9 EM (Dunlop)	○	○
Agriculture: 400/70 R20, XMCL (Michelin)	○	○
Various buckets and other attachment on request	○	○

Model		R070	R090
<b>Travelling</b>			
Tyre size		12.5 – 18	12.5 – 18
Travelling speed (forward / reverse)	km/h	0 to 20.0 / 0 to 20.0	0 to 20.0 / 0 to 20.0
Traction force	kN	29.1	38.2
Front / rear axle		Diff. lock 100% on demand	Diff. lock 100% on demand
Angle of oscillation	Deg.	± 8	± 8
<b>Auxiliary circuit</b>			
Max. flow rate	l/min	54.0	67.2
Max. hydraulic pressure	MPa	18.5	20.5
<b>Noise level</b>			
Sound pressure level (LpA)(canopy/cabin)	dB (A)	83 / 77	80 / 77
Sound power level (LwA (2000/14/EC))	dB (A)	100	100
Hand arm system vibration*2	m/s²	<2.5	<2.5
Whole body vibration*2	m/s²	<0.5	<0.5
<b>Capacity</b>			
Fuel tank	l	70	70
Hydraulic oil tank	l	39	39
Hydraulic oil tank, incl. hydraulic system	l	55	57
Engine oil	l	9.0	9.0
Front / rear axle oil	l	6.3 / 6.9	6.3 / 6.9

Bucket

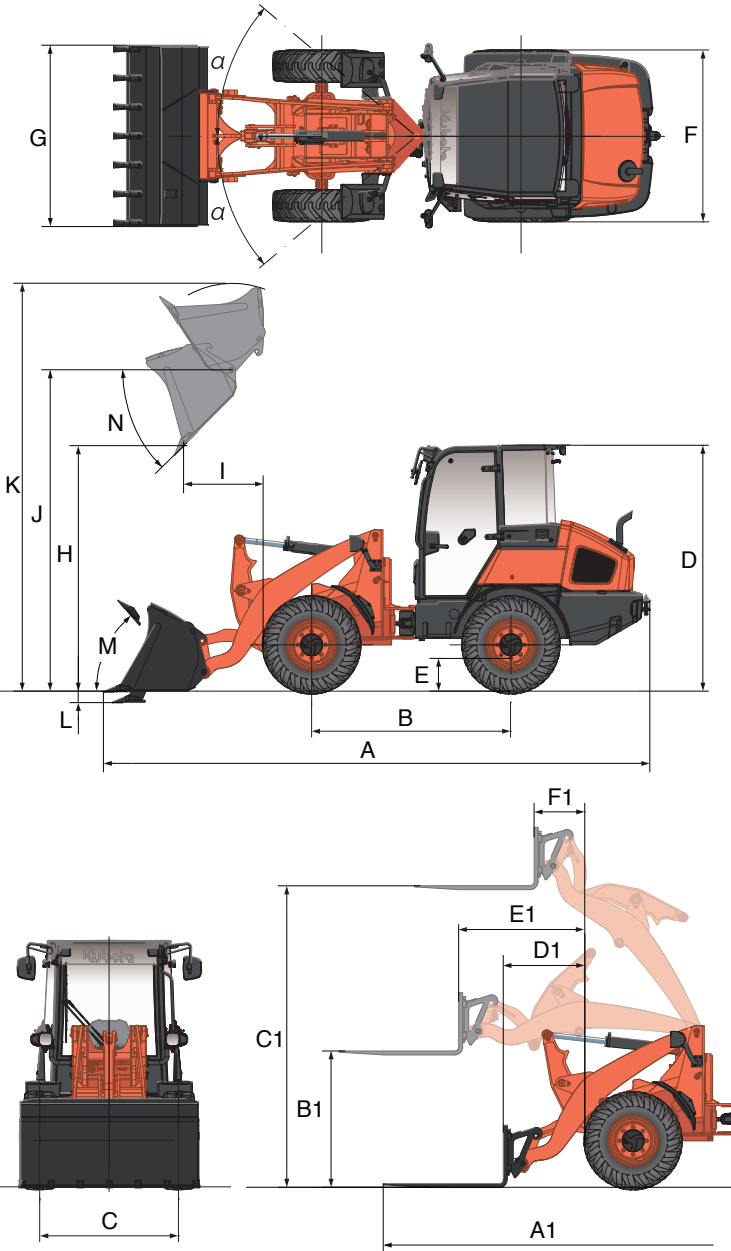
Model		R070				R090			
Type of bucket	m³	General purpose bucket (std)	General purpose bucket (wide)	4 in 1 bucket (std)	4 in 1 bucket (wide)	General purpose bucket (std)	General purpose bucket (wide)	4 in 1 bucket (std)	4 in 1 bucket (wide)
Capacity	m³	0.65	0.68	0.6	0.62	0.85	0.88	0.8	0.83
Width	mm	1750	1820	1750	1820	1820	1890	1820	1890
Weight	kg	289	297	505	516	329	338	556	568
Bulk density	t/m³	1.9	1.8	1.8	1.7	1.9	1.8	1.75	1.67
Recommend tyre	12.5-18 317 MPT (Alliance)	365/70 R18 SPT9 EM (Dunlop)	12.5-18 317 MPT (Alliance)	365/70 R18 SPT9 EM (Dunlop)	12.5-18 317 MPT (Alliance)	405/70 R18 SPT9 EM (Dunlop)	12.5-18 317 MPT (Alliance)	405/70 R18 SPT9 EM (Dunlop)	
	12.5-20 317 MPT (Alliance)	340/80 R18 XMCL (Michelin)	12.5-20 317 MPT (Alliance)	340/80 R18 XMCL (Michelin)	12.5-20 317 MPT (Alliance)	400/70 R20 XMCL (Michelin)	12.5-20 317 MPT (Alliance)	400/70 R20 XMCL (Michelin)	

Pallet fork

Model		R070	R090
Fork length	mm	1200	1200

Working range

With Bucket Attachment		R070	R090
		General purpose bucket	General purpose bucket
		Standard width	Standard width
<b>Machine dimension</b>			
A Overall length	mm	5395	5485
B Wheelbase	mm	2000	2000
C Tread	mm	1355	1400
D Overall height (canopy / cabin)	mm	2460 / 2480	2460 / 2480
E Ground clearance	mm	330	330
F Overall width (outside of tires)	mm	1680	1725
G Overall width (bucket)	mm	1750	1820
<b>Working range</b>			
H Dumping clearance	mm	2525	2465
I Dumping reach	mm	730	790
J Max. hinge pin height	mm	3230	3230
K Max. lifting height	mm	3995	4100
L Digging depth	mm	110	110
<b>Others</b>			
M Tilt back angle (at traveling position)	Deg.	50	50
N Dumping angle	Deg.	45	45
α Articulation angle	Deg.	40	40
Turning radius (tire clearance circle)	mm	3640	3660



With pallet fork attachment		R070	R090
Fork length	mm	1200	1200
<b>Working range</b>			
A1 Overall length	mm	5895	5900
B1 Height of forks at Max. reach	mm	1370	1370
C1 Height of forks at Max. height	mm	3030	3030
D1 Reach at ground level	mm	810	810
E1 Max. reach	mm	1255	1255
F1 Reach at Max. height	mm	500	500

Specifications are subject to change without notice.  
Data is valid with general purpose bucket (standard width) and standard tire (12.5-18").

**Fluorinated greenhouse gases**  
Air conditioner gas contains fluorinated greenhouse gases.

CAB model	Industrial designation	Quantity (kg)	CO <sub>2</sub> equivalent (ton)	GWP
R070/R090	HFC-134a	0.7	1.01	1430

(Global Warming Potential: GWP)

**Kubota Genuine and Approved Parts**  
for maximum performance, durability and safety

★ All images shown are for brochure purposes only.  
When operating the wheel loader, wear clothing and equipment in accordance to local legal and safety regulations.





#### **KUBOTA (U.K.) LTD**

Dormer Road, Thame,  
Oxfordshire,  
OX9 3UN, U.K.

Phone : (44) 01844-873190

F a x : (44) 01844-216685



<https://www.kubota-eu.com>

